



Date: December 15, 2020

10:00AM  
Last 24 Hr.

## Daily Report for COVID 19 Virus

Situation report about Covid 19 epidemiological, presented the daily detected cases.

### Summary of the epidemiological situation

Table (1) shows the numbers of cases

	Samples	Confirmed	Recovered	Deaths	Active
Today	1911	709	695	8	8723
Total	218363	29211	20278	210	

Closed Cases		
Worldwide	Gaza Strip	
41,492,849 (97%)	20278 (99%)	Recovered
1,492,989 (3%)	210 (1%)	Deaths
42,985,838	20,488	Total Closed
Active Cases		
21,522,337	8723	Number



## Local reported cases within community – Emergency level (D)

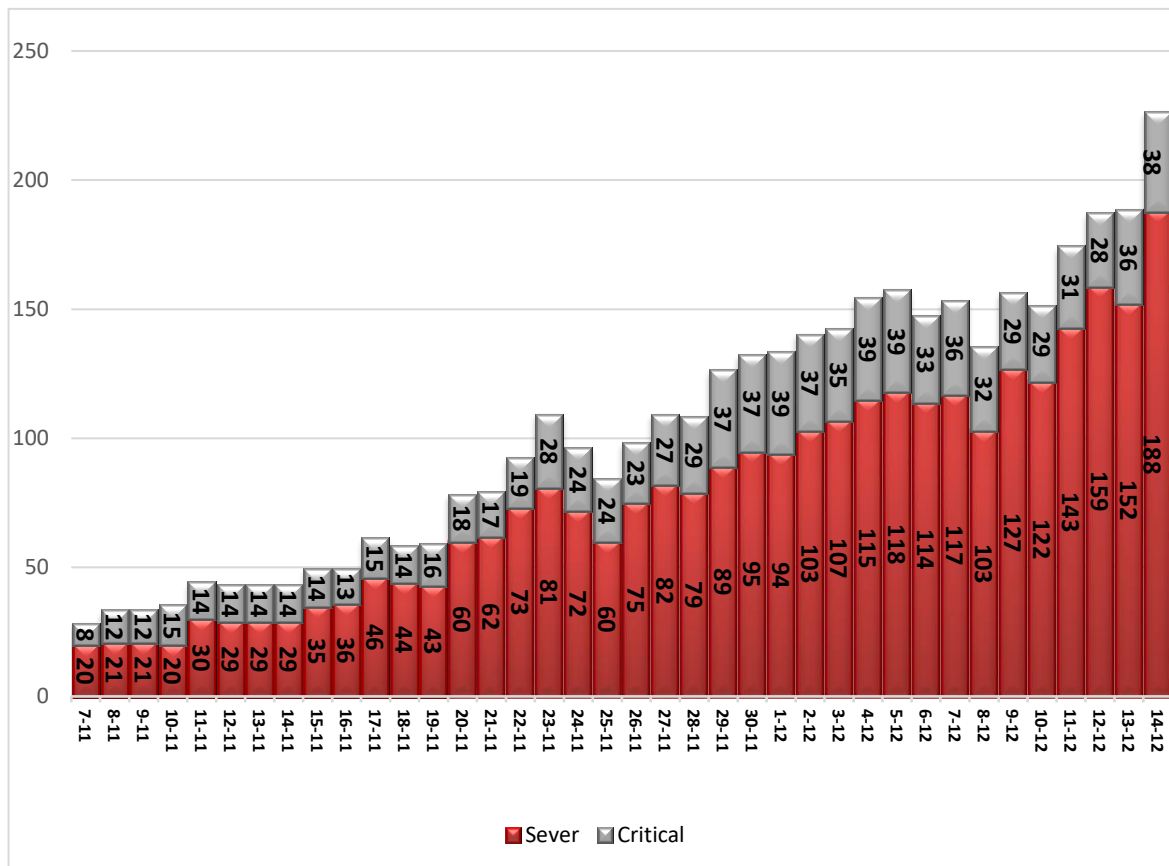
• The total number of confirmed cases is 28918, of which 8707 are still active cases receive medical care in hospitals and isolation centers, 20002 cases fully recovered and were discharged, while the number of deaths reached 209 deaths.

### I. Classification of active cases according to severity

Table (2) shows the classification of cases according to the degree of severity

Total	Other	Critical	Sever	Moderate	Mild	Classification
8717	56	38	188	74	8367	Total
100%	0.6%	0.4%	2.2%	0.8%	95.9%	Percent

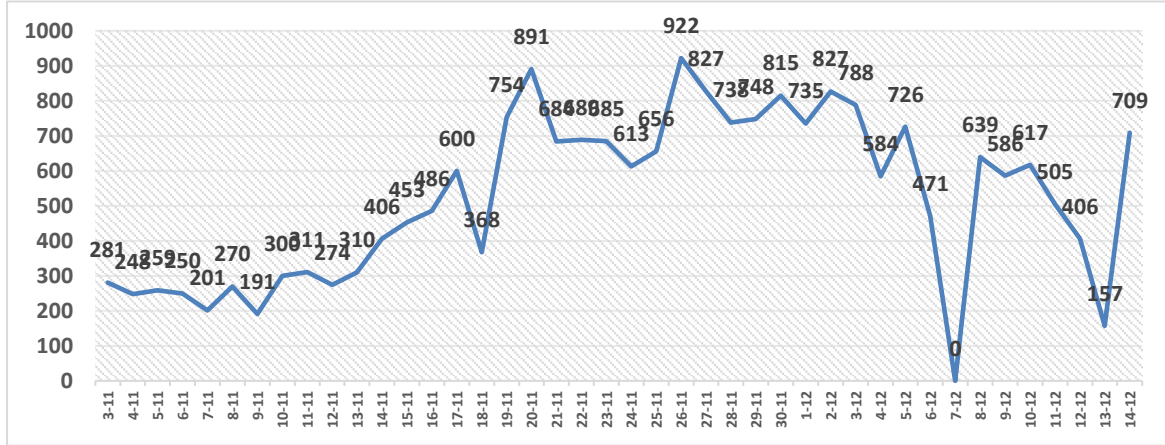
### II. Daily classification of active cases according to severity



Graph (1) Shows the daily classification of cases according to degree of severity

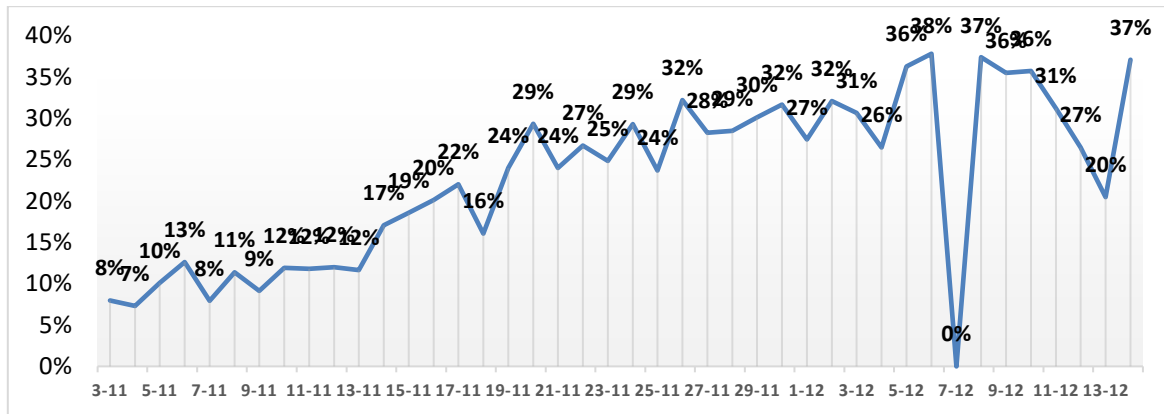


### III. Daily number of new cases within the community



Graph (2) shows number of new cases per day within the community

### IV. The percentage of positive tests of the daily samples



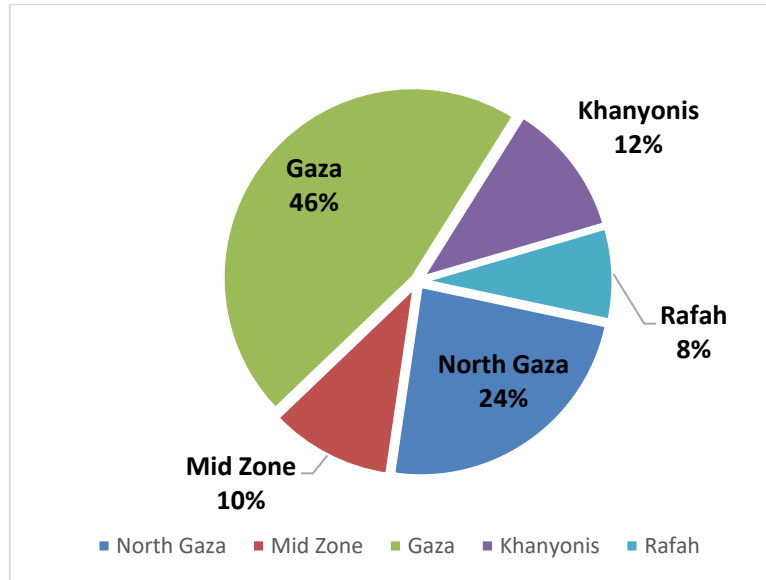
Graph (3) shows percentage of positive tests of the examined samples per day

### V. Incidence of cases by governorate

Governorate	Cases	Population	Incidence rate per 100,000
North Gaza	6893	416,906	1653
Gaza	13433	690,111	1946
Mid zone	3123	325,884	958
Khanyonis	3471	413,727	839
Rafah	2291	260,117	881
Gaza strip	29211	2,106,745	1387

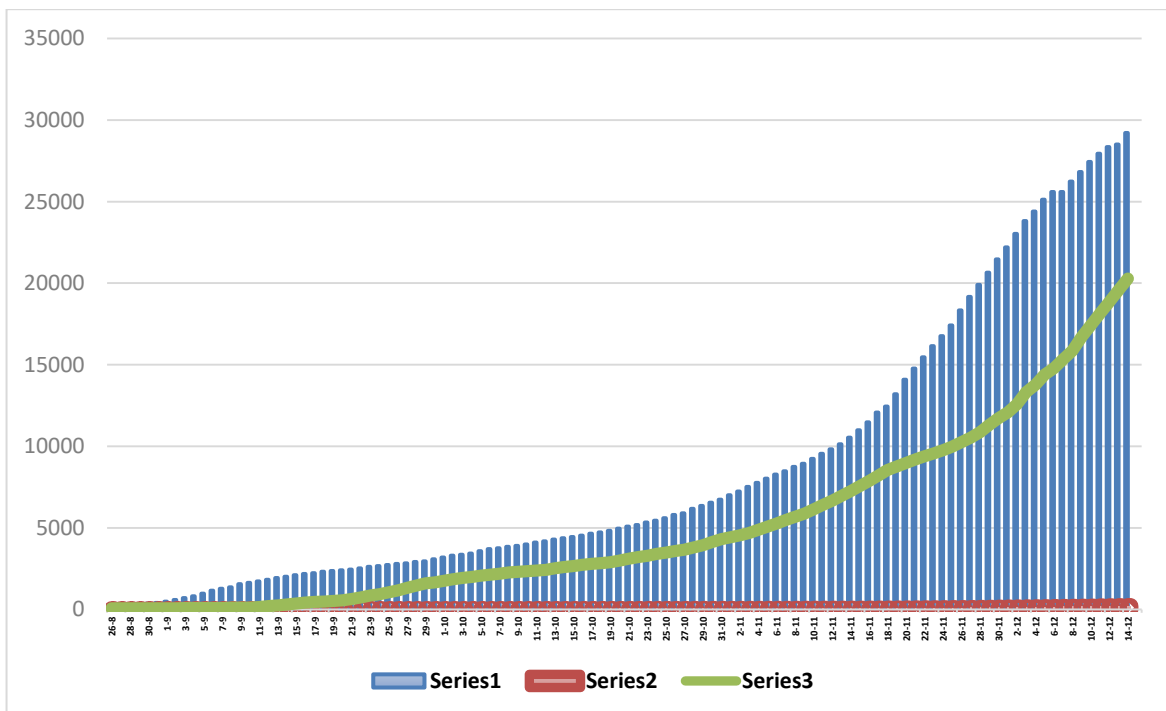


**VI. Geographical distribution of confirmed cases within the community**



Graph (4) shows geographical distribution of cases within the community per governorate.

**VII. Cumulative number of cases, recovered, deaths**



Graph (5) shows Cumulative number of cases, recovered, deaths.