



Date:13/09/2020  
10:00AM

## Daily Report for COVID 19 Virus

Situation report about Covid 19 epidemiological, presented the daily detected cases.

### Summary of the epidemiological situation

Table (1) shows the numbers of cases

	Confirmed		Active		Recovered		Deaths	
	Community	Retained	Community	Retained	Community	Retained	Community	Retained
Today	100	0	1583	5	60	0	2	0
Accumulative	1699	120			102	114	14	1
Total accumulative	1819		1588		216		15	

Table (2) shows the number of samples and the positive

	Samples		Positive	
	Community	Retained	Community	Retained
Today	1417	0	100	0
Accumulative	23272	1946 *	1699	120
Total accumulative	25218		1819	

\*Since the break out of covid-19 within community

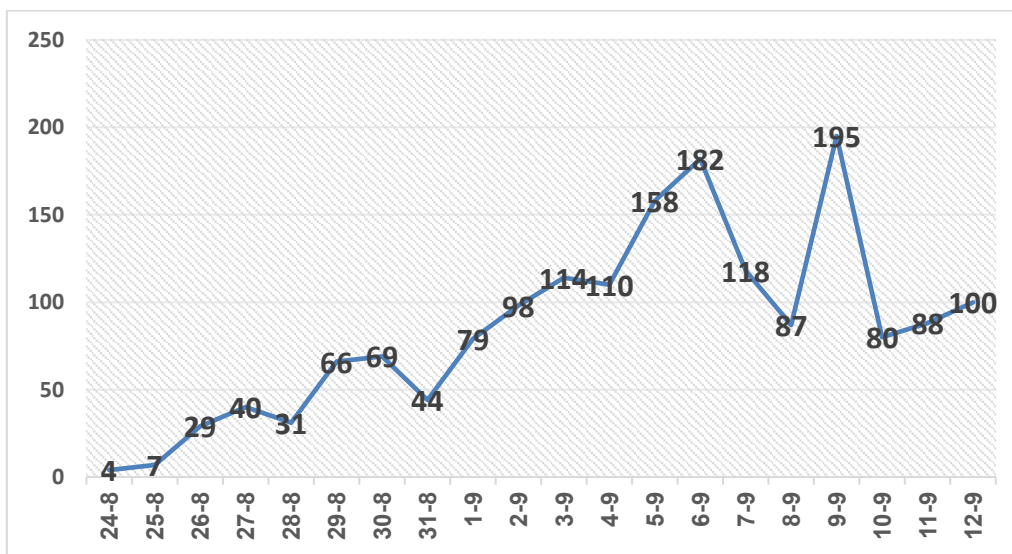
Annexes (A)



## Local reported cases within community – Emergency level (D)

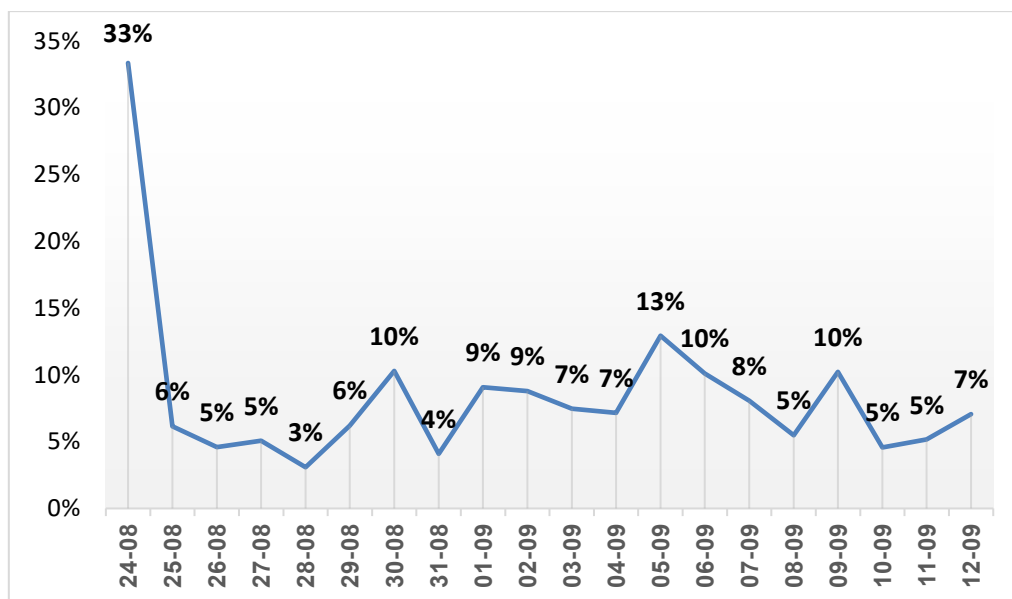
• The total number of confirmed cases is 1,699, of which 1583 are still active cases receive medical care in hospitals and isolation centers (European Gaza Hospital - Turkish Friendship - Deir Al-Balah Center), 102 cases fully recovered and were discharged, while the number of deaths reached 14 deaths.

### I. Daily number of new cases within the community



Graph (1) shows number of new cases per day within the community

### II. The percentage of positive tests of the daily samples



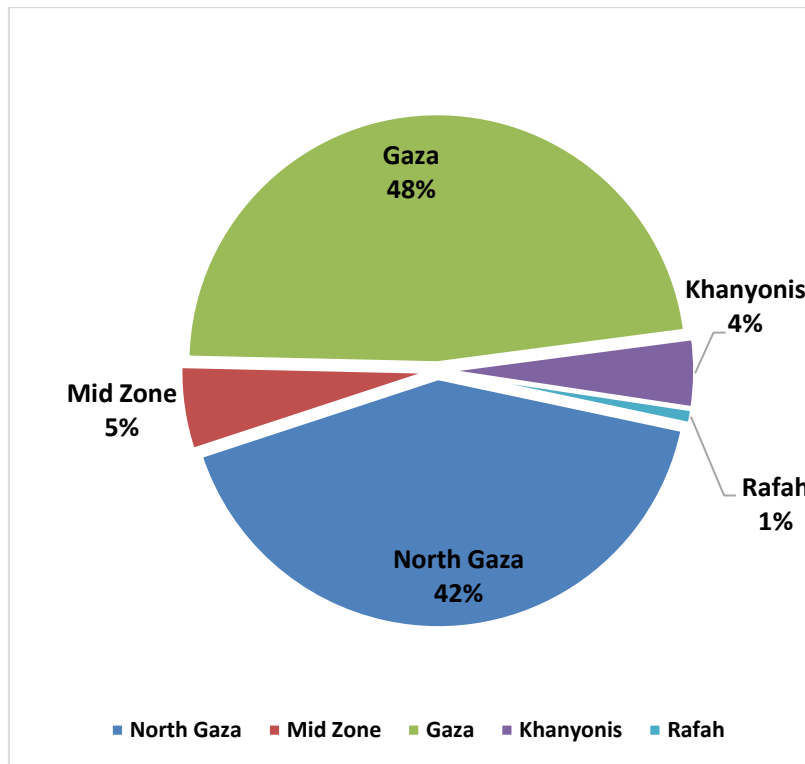
Graph (2) shows percentage of positive tests of the examined samples per day



### III. Incidence of cases by governorate

Governorate	Cases	Population	Incidence rate per 100,000
Mid zone	92	325,884	28
Khanyonis	76	413,727	18
Rafah	16	260,117	6
North Gaza	707	416,906	170
Gaza	808	690,111	117
Gaza strip	1699	2,106,745	81

### IV. Geographical distribution of confirmed cases within the community



Graph (2) shows geographical distribution of cases within the community per governorate.

## Imported cases

- Total number of confirmed imported cases is 120. Out of this total, 5 are still active cases in the isolation hospital, 114 cases fully recovered and were discharged, and one died.

## Health quarantine centers

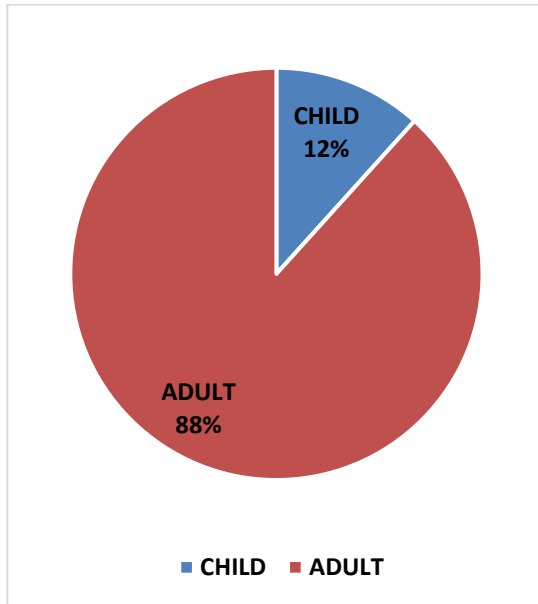
- Since 15/3/2020, all travelers coming through Rafah and Beit Hanoun (Erez) crossings had to undergo a compulsory quarantine at one of the MOH designated facilities.

The total number of cases at quarantine facilities 271 case. The number of designated quarantine facilities were 6 centers, including schools, hotels, primary health care centers, and hospitals, quarantine centers rooms distributed across the five governorates of the Gaza Strip.

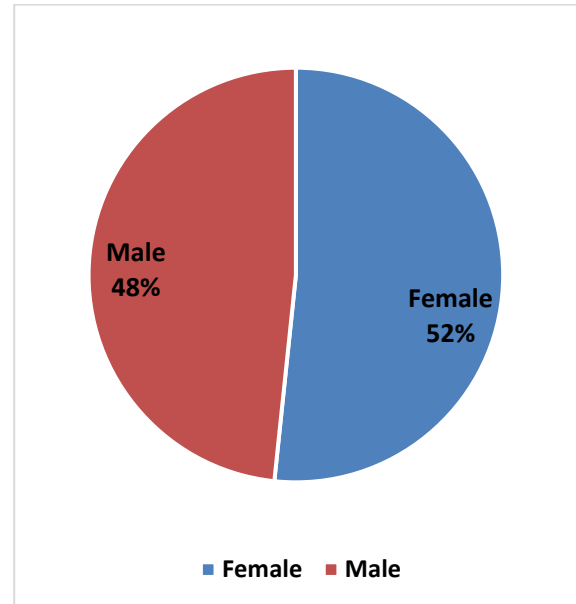
Annexes (B)

### I. Disaggregation of quarantined cases by sex and age group

- Approximately 48% of people in isolation and quarantine centers (131) are males, while children represent 12% of that total



Graph (4) shows percentage of quarantined people by age group

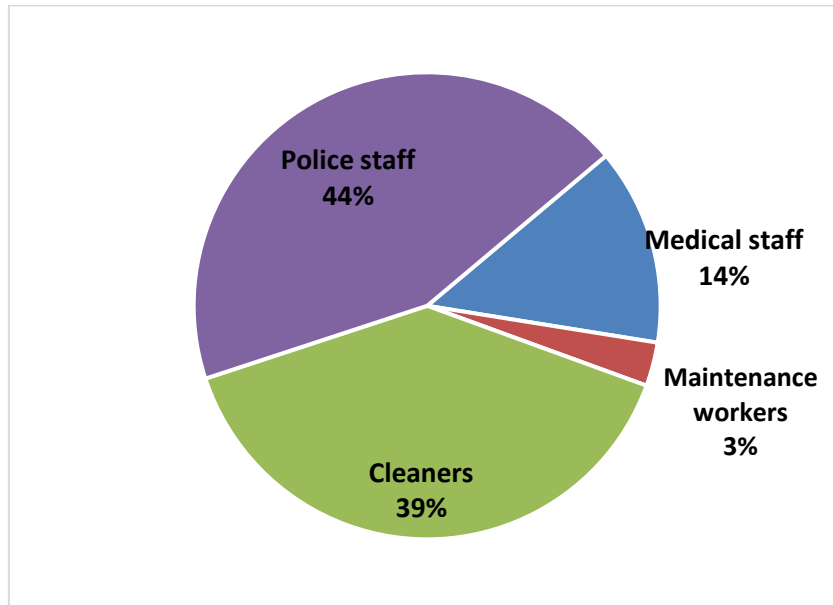


Graph (3) shows percentage of quarantined people by sex



## II. Service providers in the quarantine centers

- The number of service providers in quarantine centers reached 100 employees, 40% of them are police staff and 14% are medical staff, while the percentage of maintenance workers is 4%.



Graph (5) shows percentage of service providers in the quarantine centers



Annexes

Annexes (A)

Annexes (B)

**Distribution of cases at quarantine facilities**

No	Quarantine facility	Number of quarantined cases
1.	Blue Beach hotel	217
2.	Higgi hotel	44
3.	Asdaa Center	3
4.	Shifa Hospital	2
5.	Rantisi Hospital	2
6.	Naser Hospital	3
	<b>Total quarantined</b>	271